



## Urinary system

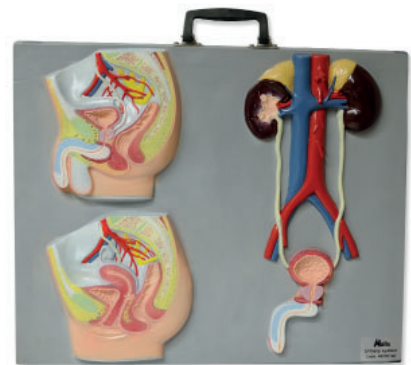
Code **QBB017, QBB018, QBB019, QBB030**

- Human urinary system provides the way to remove from the body water excess and electrolyte as well as excretion of many metabolic toxic waste substances, mainly the urea and the creatine, everything through the urine.
- Nahita educational models offer a general and detailed representation of different organs that carry out this function, so they make a graphic support highly suitable for learning the human urinary system at educational centers.

## Urinary system

Code **QBB018**

- This educational model offers a global representation of the human urinary system as lifesize that includes male and female anatomies (longitudinal section), and the organs (kidney, ureters, bladder, urethra and blood vessels).
- Three represented figures are included in a wide and strong panel with a handle to facilitate its use and transport.



Code	Parts	Magnification
QBB018	1	1x

## Urinary system, 6 parts

Code **QBB019**

- Natural size model of the male and female urinary system with 5 detachable pieces corresponding to kidney and genital organs (bladder with prostate and bladder with uterus and ovaries respectively).
- The model shows the retroperitoneal cavity, pelvis with bones and muscles, inferior cava, aorta with ramifications, upper urinary tract, kidney with adrenal gland, ureter, bladder, etc.



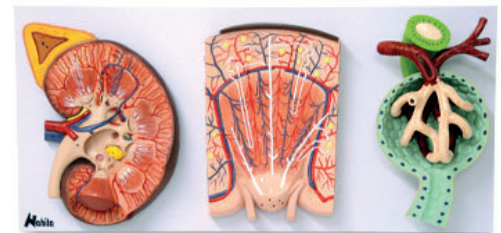
Code	Parts	Magnification
QBB019	6	1x



## Renal corpuscle and nephron

Code **QBB030**

- Complete educational model for kidney study, it consists of three parts: kidney longitudinal section (magnifications x3), nephron and blood vessels representation (magnifications 100x) and renal corpuscle representation (magnifications x650).
- As a whole these three elements show with detail the structure of said organ and of its functional unit, the nephron, offering a great supports to understand the histology and renal physiology.
- All parts are assembled on the same base.



Code	Parts	Magnification
QBB030	6	3x-100x-650x

## Renal corpuscle

Code **QBB017**

- This single model of renal corpuscle (magnifications 700x) allows to visualize this part of the nephron, it is responsible for filtration of the plasma and where both basic structures are combined, Bowman capsule and renal glomerulus.



Code	Parts	Magnification
QBB017	6	1x