

FILTRES RS the history

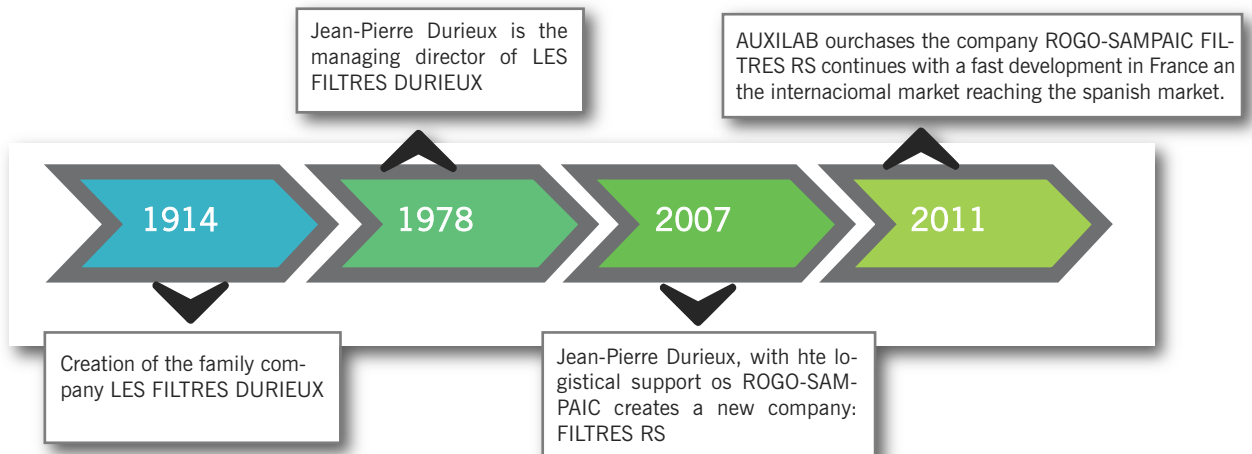


FILTRES RS
par Jean-Pierre D.

With the experience of more than two generations, the DURIEUX family has become a reference in the market of filter paper, being specialists in their own manufacture of filter paper.

Jean-Pierre DURIEUX started working in the family company, becoming the managing director of LES FILTRES DURIEUX in 1978.

Today, the manufacture of the whole range of FILTRES RS is made under supervision of Jean-Pierre DURIEUX, a recognised expert in the sector. Thanks to the experience gained during all his career, he has managed to create a high quality filter paper, offering the possibility of a custom-made manufacture according to user's needs.



FILTRES RS the applications

[01] Health
Pharmaceutical industry



[02] Beverages



[03] Food industry



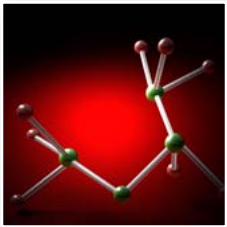
[04] Research



[04] Education



[05] Chemistry



[06] Metallurgical industry



[07] Atmospheric
pollution



[08] Water and solvent



[09] Petroleum derived



FILTRES RS **the range**



- [01] Standar filters and ream
- [02] Quantitative filters
- [03] Qualitative filters
- [04] Glass microfibre filters
- [05] Quartz microfibre filters
- [06] Extraction thimbles
- [07] Filtration membranes
- [08] Syringe filters
- [09] pH paper
- [10] Wipping paper
- [11] Others..

FILTRES RS

equivalence chart

FILTRES RS	LES FILTRES DURIEUX	WHATMAN	SARTORIUS MUNKTELL	FIORONI	PRAT DUMAS	MACHEREY	SCHLEICHER & SCHUELL	ADVANTEC
FSCLO	111 BLEU	42	391	14	6601	640 de	-	5C
FSCMO	111 BLANC	40	392	13	6600	640 w	589/6	5B
FSCRO	111 ROUGE	41	389	12	6602	615	589/2	7
FSCSG	111 VERT	43	-	32	6602	-	589/5	6
FSCTR	113 NOIR	41	389F	11	603	640we	589/2	7
FSCLO	115	52/50	1289	153	600/601	1672/1674	-	-
FC28M	128	-	292	113	-	-	-	-
FC27E	127	113	289	-	613	-	-	-
FC75M	SUPER	31	-	111	-	-	-	-
FC20M	120	32/1	290	114	-	-	-	-
FC26R	126	2	292	-	110	616 md	597	2
FC22L	122	3	291	-	210	-	-	131
FC75R	200	4	416 / 291	-	-	-	604	101
FC29E	129	2589a	293 / SB2	-	116	619de	-	-
FC49L	149	-	-	115	-	-	-	-
FC21R	121	17/AA	C250	-	-	-	-	-
FC150R	400	120	-	-	-	-	-	-
SP	SEPARATEUR	1PS	-	-	306H	-	-	-
FV280	D28	GF/A	GMF5	259	8837	GF-1	GF 50	GA 55
FV290	D29	GF/B	GMF2	260	88140	GF-2	GF 51	GB 140
FV340	D34	GF/C	GMF1	-	8855	GF-3	GF 52	GC 50
FV380	D38	GF/F	-	262	-	GF-5	GF 55	GF 75

FILTRES RS standard filters

STANDARD FILTERS; applications



Health and pharmaceutical industry



Food industry



Research



Education

STANDARD FILTERS; features

Type	Standard
Weight (g/m ²)	77
Thickness (mm)	0.16/0.18
pH	7
Humidity (%)	6.8 ± 0.2
Resistance, dry state (Kg)	
Longitudinal	3.5/4.0 > 3.5
Through	1.3/1.4 > 2.2
Resistencia en húmedo (Kg)	
Longitudinal	> 0.8
Through	> 0.5
Porosity (µm)	8-11

STANDARD FILTERS; plain y folded



Plain	Folded	Ø (mm)	Box of (uds.)
80001055		55	100
80001070	80002070	70	100
80001090		90	100
80001100	80002100	100	100
80001130	80002130	130	100
80001150	80002150	150	100
80001185		185	100
80001190	80002190	190	100
80001250	80002250	250	100
80001330	80002330	330	100
80001400	80002400	400	100
80001450	80002450	450	100
80001500	80002500	500	100
80001650	80002650	650	100

FILTRES RS standard filters

STANDARD FILTERS; ream



Code	Paper type	Weight	Dimensions	Resma de
80003150	Joseph paper	25 g/m ²	15x15 cm	500 sheets
80003355	Joseph paper	25 g/m ²	35x50 cm	500 sheets
80003358	Joseph paper	25 g/m ²	35x50 cm	800 sheets
80250452	White paper 7 Kg	67 g/m ²	40/42x52 cm	500 sheets
80003520	White paper 7 Kg	77 g/m ²	52x52 cm	500 sheets
80003421	Grey paper	60 g/m ²	42x52 cm	500 sheets

FILTRES RS quantitative filters



QUANTITATIVE FILTERS; features

Type	Weight (g/m ²)	Thickness (mm)	Retention (μm)	Filtration speed (s)	Resist. wet state
SCLO	80	0.2	3	100	Medium
SCMO	80	0.16	6	40	Medium
SCRO	80	0.16	10	25	Correct
SCTR	80	0.13	15	12	Correct
SCSG	80	0.16	6	40	Medium

FILTRES RS quantitative filters

QUANTITATIVE FILTERS; applications



Food industry



Chemistry



Beverages



Metallurgical industry

QUANTITATIVE FILTERS; SCLO

- 1| Slow filtration speed, dense texture.
- 2| Ideal for retention of fine precipitates.

Plain	Folded	Ø (mm)	Box of (uds.)
82101012		12	100
82101022		22	100
82101040		40	100
82101055		55	100
82101070	82102070	70	100
82101090	82102090	90	100
82101110	82102110	110	100
82101125	82102125	125	100
82101135	82102135	135	100
82101150	82102150	150	100
82101185	82102185	185	100
82101210	82102210	210	100
82101240	82102240	240	100

QUANTITATIVE FILTERS; SCMO

- 1| Medium filtration speed, medium texture.
- 2| Ideal for general gravimetric analysis

Plain	Folded	Ø (mm)	Box of (uds.)
82201012		12	100
82201022		22	100
82201040		40	100
82201055		55	100
82201070	82202070	70	100
82201090	82202090	90	100
82201110	82202110	110	100
82201125	82202125	125	100
82201135	82202135	135	100
82201150	82202150	150	100
82201185	82202185	185	100
82201210	82202210	210	100
82201240	82202240	240	100

FILTRES RS

quantitative filters

QUANTITATIVE FILTERS; SCSG

- 1 | Medium filtration speed, without fats.
- 2 | Medium texture.
- 3 | Ideal for determination of fats in food industry.

Plain	Folded	Ø (mm)	Box of (uds.)
82121012		12	100
82121022		22	100
82121040		40	100
82121055		55	100
82121070	82122070	70	100
82121090	82122090	90	100
82121110	82122110	110	100
82121125	82122125	125	100
82121135	82122135	135	100
82121150	82122150	150	100
82121185	82122185	185	100
82121210	82122210	210	100
82121240	82122240	240	100

QUANTITATIVE FILTERS; SCRO

- 1 | Fast filtration speed.
- 2 | Loose texture.
- 3 | Ideal for metallurgical industry.

Plain	Folded	Ø (mm)	Box of (uds.)
82301012		12	100
82301022		22	100
82301040		40	100
82301055		55	100
82301070	82302070	70	100
82301090	82302090	90	100
82301110	82302110	110	100
82301125	82302125	125	100
82301135	82302135	135	100
82301150	82302150	150	100
82301185	82302185	185	100
82301210	82302210	210	100
82301240	82302240	240	100

FILTRES RS quantitative filters

QUANTITATIVE FILTERS; SCTR

- 1 | Very fast filtration speed.
- 2 | Loose texture.
- 3 | Ideal for retention of big precipitates as metal hydrides.

Plain	Folded	Ø (mm)	Box of (uds.)
82401012		12	100
82401022		22	100
82401040		40	100
82401055		55	100
82401070	82402070	70	100
82401090	82402090	90	100
82401110	82402110	110	100
82401125	82402125	125	100
82401135	82402135	135	100
82401150	82402150	150	100
82401185	82402185	185	100
82401210	82402210	210	100
82401240	82402240	240	100

FILTRES RS qualitative filters



QUALITATIVE FILTERS; features

Type	Weight (g/m ²)	Thickness (mm)	Retention (µm)	Filtration speed (s)	Resist. wet state
FC29E	180	0.45	2	200	Very good
FC22L	85	0.20	3	100	Medium
FC27E	160	0.45	8	120	Good
FC49L	150	0.40	2	180	Very good
FC28M	80	0.18	5	40	Very good
FC20M	77	0.13	5	40	Good
FC75M	75	0.16	6	50	Medium
FC26R	75	0.15	10	30	Correct
FC21R	75	0.17	10	35	Medium
FC150R	150	0.35	8	40	Very good
FC75R	60	0.12	15	25	Good
FC25R	77	0.15	8	35	Medium

FILTRES RS

qualitative filters

QUALITATIVE FILTERS; applications



Food industry



Beverages



Chemistry



Education



Pollution



Oils

QUALITATIVE FILTERS; FC29E

- 1 | Very slow filtration speed.
- 2 | Extra-hard paper.
- 3 | Ideal for aqueous solutions and volatile liquids such as alcohols, fuels, ether, etc.

Plain	Folded	Ø (mm)	Box of (uds.)
83001025		25	100
83001040		40	100
83001055		55	100
83001070		70	100
83001090	83002090	90	100
83001110	83002110	110	100
83001125	83002125	125	100
83001135	83002135	135	100
83001150	83002150	150	100
83001185	83002185	185	100
83001210	83002210	210	100
83001240	83002240	240	100
83001270	83002270	270	100
83001320	83002320	320	100
83001385	83002385	385	100
83001450	83002450	450	100
83001500	83002500	500	100
83001650	83002650	650	50
83001700	83002700	700	50
83001800	83002800	800	50
83001900	83002900	900	50
83001000	83002000	1000	50

FILTRES RS

qualitative filters

QUALITATIVE FILTERS; FC27E

- 1| Fast filtration speed, extra-soft thick paper.
- 2| Ideal for filtration of oils, syrups, fat substances. Used also with Buchner funnels.

Plain	Folded	Ø (mm)	Box of (uds.)
83111025		25	100
83111040		40	100
83111055		55	100
83111070	83112070	70	100
83111090	83112090	90	100
83111110	83112110	110	100
83111125	83112125	125	100
83111135	83112135	135	100
83111150	83112150	150	100
83111185	83112185	185	100
83111210	83112210	210	100
83111240	83112240	240	100
83111270	83112270	270	100
83111320	83112320	320	100
83111385	83112385	385	100
83111450	83112450	450	100
83111500	83112500	500	100

QUALITATIVE FILTERS; FC22L

- 1| Slow filtration speed.
- 2| Dense texture with high retention.
- 3| Ideal for vacuum filtration of injectable serum, etc.

Plain	Folded	Ø (mm)	Box of (uds.)
83101025		25	100
83101040		40	100
83101055		55	100
83101070	83102070	70	100
83101090	83102090	90	100
83101110	83102110	110	100
83101125	83102125	125	100
83101135	83102135	135	100
83101150	83102150	150	100
83101185	83102185	185	100
83101210	83102210	210	100
83101240	83102240	240	100
83101270	83102270	270	100
83101320	83102320	320	100
83101385	83102385	385	100
83101450	83102450	450	100
83101500	83102500	500	100

FILTRES RS

qualitative filters

QUALITATIVE FILTERS; FC28M

- 1 | Medium filtration speed.
- 2 | Very high resistance even when wet.
- 3 | Ideal for alkaline or acid solutions.

Plain	Folded	Ø (mm)	Box of (uds.)
83201040		40	100
83201055		55	100
83201070	83202070	70	100
83201090	83202090	90	100
83201110	83202110	110	100
83201125	83202125	125	100
83201135	83202135	135	100
83201150	83202150	150	100
83201185	83202185	185	100
83201210	83202210	210	100
83201240	83202240	240	100
83201270	83202270	270	100
83201320	83202320	320	100
83201385	83202385	385	100
83201450	83202450	450	100
83201500	83202500	500	100

QUALITATIVE FILTERS; FC20M

- 1 | Medium filtration speed.
- 2 | Good retention.
- 3 | Ideal for general and educational purposes.

Plain	Folded	Ø (mm)	Box of (uds.)
83211025		25	100
83211040		40	100
83211055		55	100
83211070	83212070	70	100
83211090	83212090	90	100
83211110	83212110	110	100
83211125	83212125	125	100
83211135	83212135	135	100
83211150	83212150	150	100
83211185	83212185	185	100
83211210	83212210	210	100
83211240	83212240	240	100
83211270	83212270	270	100
83211320	83212320	320	100
83211385	83212385	385	100
83211450	83212450	450	100
83211500	83212500	500	100

FILTRES RS

qualitative filters

QUALITATIVE FILTERS; FC75M

- 1| Medium filtration speed.
- 2| Very hard paper.
- 3| Most used filter paper for qualitative analysis, phosphates, sugars, fertilizers,...

Plain	Folded	Ø (mm)	Box of (uds.)
83221025		25	100
83221040		40	100
83221055		55	100
83221070	83222070	70	100
83221090	83222090	90	100
83221110	83222110	110	100
83221125	83222125	125	100
83221135	83222135	135	100
83221150	83222150	150	100
83221185	83222185	185	100
83221210	83222210	210	100
83221240	83222240	240	100
83221270	83222270	270	100
83221320	83222320	320	100
83221385	83222385	385	100
83221450	83222450	450	100
83221500	83222500	500	100

QUALITATIVE FILTERS; FC21R

- 1| Fast filtration speed.
- 2| Very pure paper.
- 3| Ideal for filtration of mucilaginous liquids.

Plain	Folded	Ø (mm)	Box of (uds.)
83311025		25	100
83311040		40	100
83311055		55	100
83311070	83312070	70	100
83311090	83312090	90	100
83311110	83312110	110	100
83311125	83312125	125	100
83311135	83312135	135	100
83311150	83312150	150	100
83311185	83312185	185	100
83311210	83312210	210	100
83311240	83312240	240	100
83311270	83312270	270	100
83311320	83312320	320	100
83311385	83312385	385	100
83311450	83312450	450	100
83311500	83312500	500	100

FILTRES RS

qualitative filters

QUALITATIVE FILTERS; FC26R

- 1 | Fast filtration speed.
- 2 | Very pure paper.
- 3 | Ideal for preparation and analysis of pharmaceutical products and of metallurgical analysis.

Plain	Folded	Ø (mm)	Box of (uds.)
83301025		25	100
83301040		40	100
83301055		55	100
83301070	83302070	70	100
83301090	83302090	90	100
83301110	83302110	110	100
83301125	83302125	125	100
83301135	83302135	135	100
83301150	83302150	150	100
83301185	83302185	185	100
83301210	83302210	210	100
83301240	83302240	240	100
83301270	83302270	270	100
83301320	83302320	320	100
83301385	83302385	385	100
83301450	83302450	450	100
83301500	83302500	500	100

QUALITATIVE FILTERS; FC150R

- 1 | Fast filtration speed.
- 2 | Crepe paper of 150 g/m².
- 3 | Ideal filtration of loaded liquids.

Plain	Folded	Ø (mm)	Box of (uds.)
83321025		25	100
83321040		40	100
83321055		55	100
83321070		70	100
83321090	83322090	90	100
83321110	83322110	110	100
83321125	83322125	125	100
83321135	83322135	135	100
83321150	83322150	150	100
83321185	83322185	185	100
83321210	83322210	210	100
83321240	83322240	240	100
83321270	83322270	270	100
83321320	83322320	320	100
83321385	83322385	385	100
83321450	83322450	450	100
83321500	83322500	500	100

FILTRES RS

qualitative filters

QUALITATIVE FILTERS; FC25R

- 1 | Fast filtration speed.
- 2 | Smooth paper.
- 3 | Ideal for big volumen precipitates.

Plain	Folded	Ø (mm)	Box of (uds.)
83331025		25	100
83331040		40	100
83331055		55	100
83331070	83332070	70	100
83331090	83332090	90	100
83331110	83332110	110	100
83331125	83332125	125	100
83331135	83332135	135	100
83331150	83332150	150	100
83331185	83332185	185	100
83331210	83332210	210	100
83331240	83332240	240	100
83331270	83332270	270	100
83331320	83332320	320	100
83331385	83332385	385	100
83331450	83332450	450	100
83331500	83332500	500	100

QUALITATIVE FILTERS; FC75R

- 1 | Very fast filtration speed.
- 2 | Very resistant crepe paper.
- 3 | Ideal for all kinds of fast filtrations.

Plain	Folded	Ø (mm)	Box of (uds.)
83401025		25	100
83401040		40	100
83401055		55	100
83401070	83402070	70	100
83401090	83402090	90	100
83401110	83402110	110	100
83401125	83402125	125	100
83401135	83402135	135	100
83401150	83402150	150	100
83401185	83402185	185	100
83401210	83402210	210	100
83401240	83402240	240	100
83401270	83402270	270	100
83401320	83402320	320	100
83401385	83402385	385	100
83401450	83402450	450	100
83401500	83402500	500	100

FILTRES RS

glass microfibre filters



GLASS MICROFIBRE FILTERS; applications



Food industry



Analisis of atmospheric pollution



Water and solvnet



Petroleum industry

GLASS MICROFIBRE FILTERS ; features

Type	Efficiency (%)	Weight g/m ²	Thickness mm	Retention (μm)	Filtration speed (seconds)	Resist. wet state
FV280	99.99	85	0.80	0.7	12	Very good
FV290	99.99	200	1.70	0.8	24	Good
FV340	95	50	0.30	2	8	Good
FV380	95	85	0.80	1.6	8	Good

FILTRES RS

glass microfibre filters

GLASS MICROFIBRE FILTERS; FV280

1 | For Biochemistry and atmospheric pollution analysis.

Plain	Ø (mm)	Box of (uds.)
84001020	20	100
84001021	21	100
84001024	24	100
84001025	25	100
84001040	40	100
84001045	45	100
84001047	47	100
84001055	55	100
84001060	60	100
84001070	70	100
84001090	90	100
84001110	110	100
84001125	125	100
84001130	130	100
84001140	140	100
84001150	150	100
84001160	160	100
84001185	185	100
84001200	200	100
84001210	210	100
84001240	240	100

GLASS MICROFIBRE FILTERS; FV290

1 | For filtration of very thin precipitates with very high retention.

Plain	Ø (mm)	Box of (uds.)
84011020	20	100
84011021	21	100
84011024	24	100
84011025	25	100
84011040	40	100
84011045	45	100
84011047	47	100
84011055	55	100
84011060	60	100
84011070	70	100
84011090	90	25
84011110	110	25
84011125	125	25
84011130	130	25
84011140	140	25
84011150	150	25
84011160	160	25
84011185	185	25
84011200	200	25
84011210	210	25
84011240	240	25

FILTRES RS

glass microfibre filters

GLASS MICROFIBRE FILTERS; FV340

1 | Ideal for control of atmospheric pollution.

Plain	Ø (mm)	Box of (uds.)
84021020	20	100
84021021	21	100
84021024	24	100
84021025	25	100
84021040	40	100
84021045	45	100
84021047	47	100
84021055	55	100
84021060	60	100
84021070	70	100
84021090	90	100
84021110	110	100
84021125	125	100
84021130	130	100
84021140	140	100
84021150	150	100
84021160	160	100
84021185	185	100
84021200	200	100
84021210	210	100
84021240	240	100

aGLASS MICROFIBRE FILTERS; FV380

1 | Ideal for using as pre-filtres in membrane filtration.

Plain	Ø (mm)	Box of (uds.)
84031020	20	100
84031021	21	100
84031024	24	100
84031025	25	100
84031040	40	100
84031045	45	100
84031047	47	100
84031055	55	100
84031060	60	100
84031070	70	100
84031090	90	25
84031110	110	25
84031125	125	25
84031130	130	25
84031140	140	25
84031150	150	25
84031160	160	25
84031185	185	25
84031200	200	25
84031210	210	25
84031240	240	25

FILTRES RS

extraction thimbles



Food industry



Atmospheric pollution analysis



Atmospheric pollution analysis

- 1 | Made of pure fat-free cellulose cotton in a unique piece.
- 2 | High mechanical resistance.
- 3 | For Soxhlet, Kumagawa extraction apparatus and other extrac-

tion equipments.

- 4 | Application: food industry, atmospheric pollution analysis, asphalts analysis, etc. for solid-liquid extraction.



Code	Ø int. (mm)	Ø ext. (mm)	Heigh (mm)	Box of (uds.)
85001430	14	16	30	25
85001990	19	22	90	25
85001860	18	22	60	25
85002260	22	26	60	25
85002380	23	27	80	25
85026100	26	30	100	25
85002980	29	34	80	25
85003380	33	36	80	25
85003394	33	36	94	25
85033100	33	36	100	25
85034130	34	37	130	25
85037123	37	41	123	25
85038150	38	41	150	25
85041123	41	47	123	25
85046165	46	52	165	25
85054170	54	58	170	25
85058170	58	62	170	25
85065240	65	70	240	25
85075200	75	80	200	25
85075250	75	80	250	25
85092250	92	95	250	25

FILTRES RS

syringe membrane filters



SYRINGE MEMBRANE FILTERS; CELLULOSE ACETATE

Ø 13 (mm)	Ø 25 (mm)	Porosity	Colour	Cajas de
80050005	80050030	0,20 μm	Blue	500
80050010	80050035	0,45 μm	Yellow	500
80050015	80050040	0,80 μm	Green	500
80050020	80050045	1,20 μm	Red	500
80050025	80050050	5 μm	Brown	500

STERILE

80051005	80051030	0,20 μm	Blue	50
80051010	80051035	0,45 μm	Yellow	50
80051015	80051040	0,80 μm	Green	50
80051020	80051045	1,20 μm	Red	50
80051025	80051050	5 μm	Brown	50

CARTER PP

80052005	80052030	0,20 μm	-	500
80052010	80052035	0,45 μm	-	500
80052015	80052040	0,80 μm	-	500
80052020	80052045	1,20 μm	-	500
80052025	80052050	5 μm	-	500

FILTRES RS

SYRINGE MEMBRANE FILTERS

SYRINGE MEMBRANE FILTERS; DE NYLON

Code	Ø (mm)	Porosity
80053005	13 mm	0,20 µm
80053010	13 mm	0,45 µm
80053015	25 mm	0,20 µm
80053020	25 mm	0,45 µm

SYRINGE MEMBRANE FILTERS; DE CELULOSA REGENERADA

Code	Ø (mm)	Porosity
80053305	13 mm	0,20 µm
80053310	13 mm	0,45 µm
80053315	25 mm	0,20 µm
80053320	25 mm	0,45 µm

SYRINGE MEMBRANE FILTERS; DE POLYETHERSULFONE

Code	Ø (mm)	Porosity
80053105	13 mm	0,20 µm
80053110	13 mm	0,45 µm
80053115	25 mm	0,20 µm
80053120	25 mm	0,45 µm

SYRINGE MEMBRANE FILTERS; DE CLORURO DE POLIVINILO

Code	Ø (mm)	Porosity
80053405	13 mm	0,20 µm
80053410	13 mm	0,45 µm
80053415	25 mm	0,20 µm
80053420	25 mm	0,45 µm

SYRINGE MEMBRANE FILTERS; CELLULOSE NITRATE

Code	Ø (mm)	Porosity
80053205	13 mm	0,20 µm
80053210	13 mm	0,45 µm
80053215	25 mm	0,20 µm
80053220	25 mm	0,45 µm

SYRINGE MEMBRANE FILTERS; PTFE

Code	Ø (mm)	Porosity
80053505	13 mm	0,20 µm
80053510	13 mm	0,45 µm
80053515	25 mm	0,20 µm
80053520	25 mm	0,45 µm

SYRINGE MEMBRANE FILTERS; PP

Code	Ø (mm)	Porosity
80053605	13 mm	0,20 µm
80053610	13 mm	0,45 µm
80053615	25 mm	0,20 µm
80053620	25 mm	0,45 µm

SYRINGE MEMBRANE FILTERS; GLASS FILTERS MEMBRANES

Code	Ø (mm)	Porosity
80053705	25 mm	0,70 µm
80053710	25 mm	1 µm
80053715	25 mm	1,20 µm
80053720	25 mm	3,10 µm

FILTRES RS paper for chromatography

Code	Dimensions	Box of
80013010	100 x 300 mm	100 sheets
80012020	200 x 200 mm	100 sheets
80012525	250 x 250 mm	100 sheets
80012825	285 x 250 mm	25 sheets
80014657	460 x 570 mm	100 sheets
80015860	580 x 600 mm	100 sheets

FILTRES RS discs for antibiotics test

Code	Ø (mm)	Box of
80020006	6 mm	1000
80020009	9 mm	1000
80020012	12 mm	1000
80020013	13 mm	1000

FILTRES RS specials

Code	Descripción	Box of
80021212	Papel sin nitrógeno 120x120 mm	200 sheets
80001000	Papel de filtro para citocentrífugas	200 sheets

FILTRES RS paper for germination test

Code	Dimensions (mm)	Box of
80048512	85x120 mm	500
80041020	100x200 mm	500
80043020	30x200 mm	1000
80044468	440x680 mm	250
80048590	Ø. 85 mm	100

FILTRES RS paper for phase separation

Code	Ø (mm)	Box of
80030090	90 mm	100
80030110	110 mm	100
80030125	125 mm	100
80030150	150 mm	100
80030185	185 mm	100
80030210	210 mm	100
80030240	240 mm	100
80030270	270 mm	100